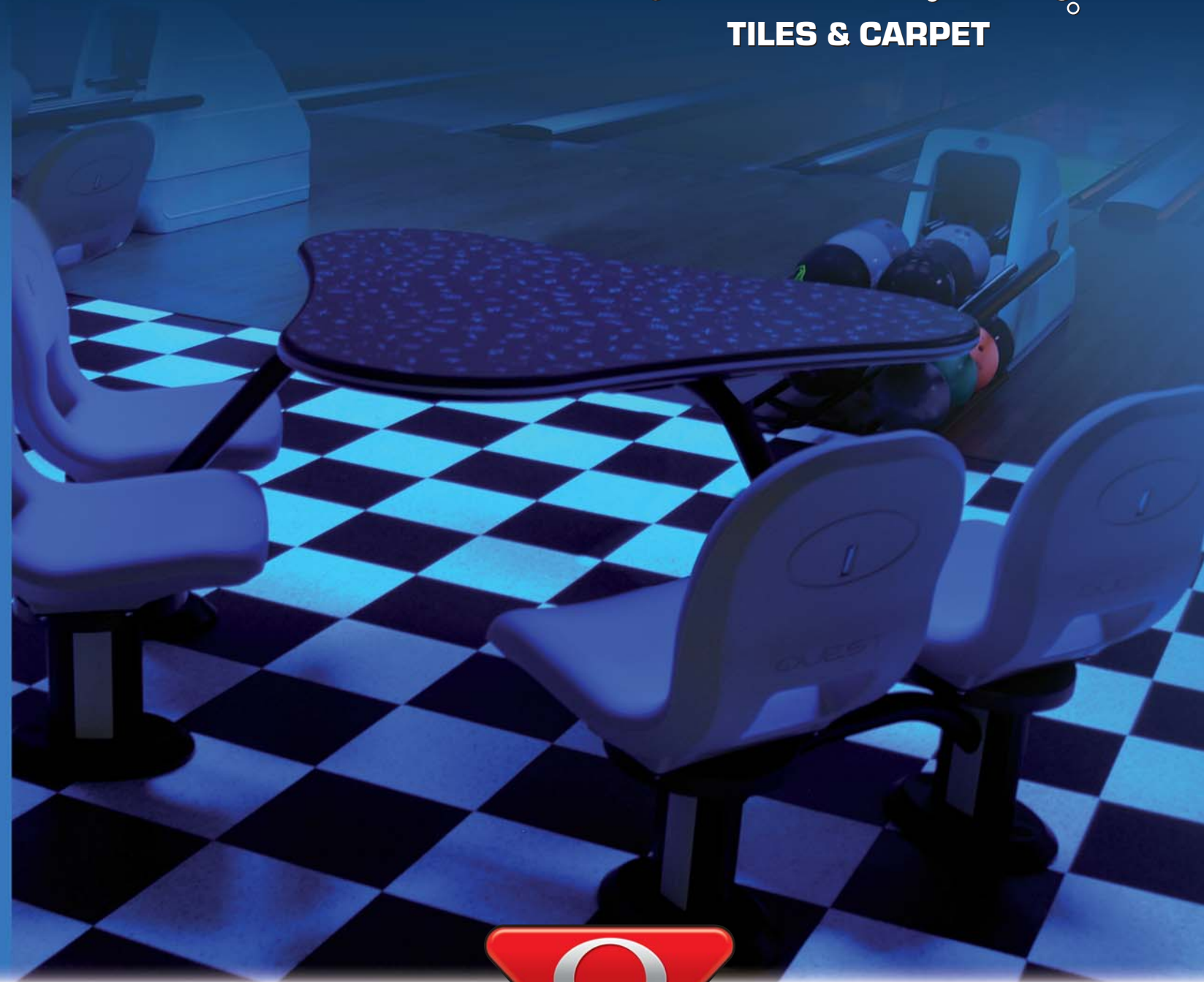


PRINTED IN ITALY

# Glow Splash

TILES & CARPET



WORLDWIDE HEADQUARTERS  
8100 AMF Drive - Mechanicsville, VA 23111 - USA  
Tel. (804) 568-1000 - Fax (804) 568-8850 - Toll free 1-866-460-QAMF (7263)

EUROPEAN HEADQUARTERS  
Via della Croce Operta, 15 - 40128 Bologna - Italy  
Tel. +39 051.4162.511 - Fax +39 051.4162.502



# GLOWSPLASH TILES AND CARPET PUT LONG-LASTING FUN AT YOUR CUSTOMER'S FEET.

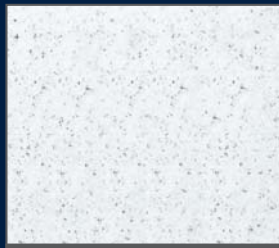
Give your customers even more glow-in-the-dark fun and excitement by installing GlowSplash Tiles and Carpet throughout your center. Both have a colorful, clean look customers will like when your normal white lights are on, and love when your black lights come on.

You'll appreciate how GlowSplash Tiles and Carpet tie in to the Xtreme bowling experience. Plus the fact that both of these attractive, commercial-grade floor-coverings come from QubicaAMF, just like all of your other Front-End needs - from pinspotters to lanes, ball returns to furniture, scoring and entertainment software, and bowling supplies. QubicaAMF has what you need to outfit a new center or upgrading your existing one.

## CUSTOMERS WILL GIVE YOU GLOWING REVIEWS OF THESE FLOOR TILES.

GlowSplash industrial floor tiles are made from vinyl (PVC) resin compounded with high quality plasticizers and stabilizers and compressed under high pressure and temperature. These 12" x 12" tiles bring you the following advantages:

- Dense, non-porous composition with long-lasting durability
- Authentic granite color and patterns with exceptional color fastness
- Resilient underfoot comfort with high wear and dent resistance
- Non-allergenic as well as mildew and odor resistant
- Available in checkerboard kit; or in all glow or non-glow tiles to create your own pattern. 45 tiles to the box



Glow Tile



Non-Glow Tile



Standard checkerboard glow pattern

(612-530-500)  
GLOWSPLASH Checkerboard Pattern Kit: 90 tiles  
(45 glow / 45 non-glow) plus acrylic emulsion glue



# HAVE CUSTOMERS NOTICE A GLOWING IMPROVEMENT IN YOUR CARPET.

Eye-catching GlowSplash carpet adds colorful excitement to your concourse area. By day it creates a stylish, contemporary atmosphere for customers in your center. By night and under black light, GlowSplash radiates with vibrant colors and designs. This 34-ounce weight, 100% Nylon, high-traffic carpet is made with a process that actually fuses the neon dyes to the nylon fibers for greater glow properties. And two stain protectors protect against fiber-color change and spills seeping in.



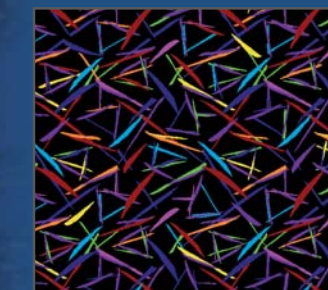
Dazzling GlowSplash carpet resists wear and tear with industrial strength.



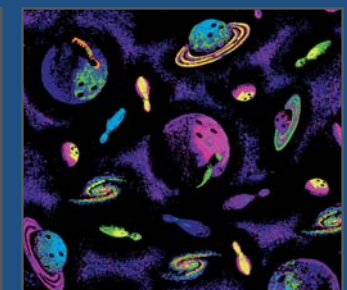
253-003-006 GLOWSPLASH Contempo



253-003-008 GLOWSPLASH Pinz



253-003-005 GLOWSPLASH Kaleidoscope



253-003-007 GLOWSPLASH Cosmic